

Rev. 10/16/12

## Features & Options

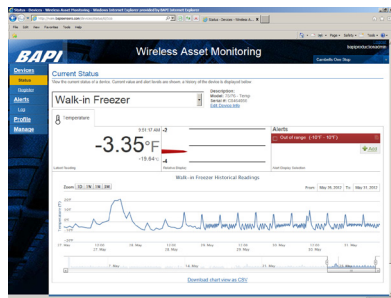
- Works with BAPI Wireless Sensors to Monitor Temperature, Humidity, Doors and Motion
- Password Protected Private Website with Live Data, Charts, Trending and Easy-to-Navigate Screens
- User Controllable Alert Parameters
- Text, Voice or Email Alerts
- Custom Reporting via Excel Data Export



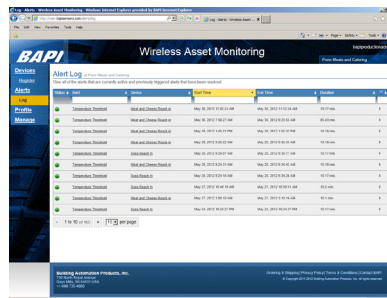
The BAPI Wireless Asset Monitoring - WAM Remote system allows users to monitor wireless sensors/transmitters from any of the popular web browsers. The WAM website is password protected and provides full administrative control. The WAM website works with any BAPI wireless sensor/transmitter to monitor parameters including temperature, humidity, doors and motion.

The wireless sensor/transmitters send their information to a BAPI WAM Receiver which passes the information on to the WAM Website via a local internet jack. Alert parameters such as high and low temperature or humidity limits can be added to each sensor through the website with alert notifications sent out to selectable recipients via email, phone text, phone call or voice mail.

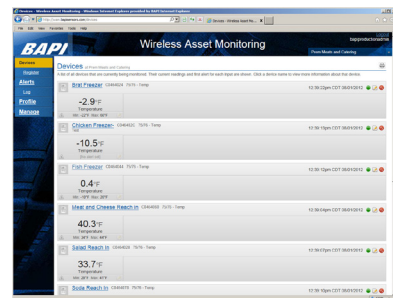
A demonstration of the system is available at "wam.bapisensors.com". Enter the User name "bapidemo" and password "bapidemo" to view a live system.



Current Status Screen



Alert Alarm Log Screen



Devices List Screen

## Specifications

**Computer HW (customer provided):** Must have internet access: Tower, Laptop, Tablet or Smart Phone

**Required Supporting Software:** Oracle JAVA or Adobe Flash Player

**Web Browsers Supported:** Microsoft Internet Explorer 7, Mozilla Firefox 11, Apple Safari 5.1, Google Chrome v18 (or newer versions of any of these)

**Display Screen:** Best with >8" color screen or smart phone

**Cell Phones Supported:** All Major Carriers with Text Messaging

**New Data Response Time Typical:**

Website Display:

Normally Within 1 Minute

New Point Registration:

Normally Within 5 Minutes

**Screen Navigation:**

Top  
Left side  
Center Screen  
Right Side if shown

First Level "Device", "Alerts", "Profile" or "Manage"

Website Information and Asset Location Name

Main Navigation Elements

Main Device or Personnel Profile Information

Device Status and/or Editing

**Remote Site Equipment:**

Wireless Receiver Gateway  
Wireless Point Transmitters  
Specialized Sensors

Purchased Separately

Wireless Asset Monitor (WAM) Receiver

Temperature, Humidity, Analog, Digital

Door Switch and Break Beam



Manufactured by Building Automation Products, Inc., 750 N. Royal Ave., Gays Mills, WI 54631 USA  
Ph:+1-608-735-4800 • Fax:+1-608-735-4804 • E-mail:sales@bapivac.com • Web:www.bapivac.com

Automated Logic and the Automated Logic logo are registered trademarks of Automated Logic Corporation

Rev. 10/16/12

### Ordering Information

<u>Part Number</u>	<u>Description</u>
<b>ALC/WAM-10-1</b> .....	10 Monitored Points on Custom WAM Website, 1 year service
<b>ALC/WAM-10-2</b> .....	10 Monitored Points on Custom WAM Website, 2 year service
<b>ALC/WAM-10-3</b> .....	10 Monitored Points on Custom WAM Website, 3 year service

The maximum number of points per location is based on the transmission interval of the sensors (contact BAPI for more info). To order more than 10 monitored points, increase the quantity of the order. (Example: Ordering 2 of the BA/WAM-10-1 equals 20 monitored points for 1 year.)

The last number in the Part Number (-1) indicates the number of years of service. Multi-year contracts are available in yearly increments ("-2", "-3", "-4", etc.). Pricing multiplies with each year.

Note: There is a maximum of 120 phone call alert messages per year for every 10 sensors included in the price. Beyond the maximum, a \$1 charge per phone call alert message will be invoiced at the end of the year. There is no limit on email or text alert messages. Multi-year service will freeze the price over the term of the service order.

### Associated Products - WAM Receiver

The WAM Receiver collects the data from the BAPI wireless sensor/transmitters. The receiver delivers the data simultaneously to the serial ASCII USB output for local use and to the RJ45 Ethernet port for communication with the BAPI WAM Website or web address of your choice.

**WAM Receiver**



### Associated Products - Wireless Sensor/Transmitters

BAPI has a wide range of wireless 418 MHz sensor/transmitters that can be monitored by the WAM Website. Parameters covered by the sensors include temperature, humidity, door switch and break beam. Locations that can be covered include freezers, coolers, storage areas or any other space within the building.

**BAPI-Slim Freezer, Cooler or Remote Sensor**



**BAPI-Stat 2 Room Sensor**



**BAPI-Box Remote Sensor**



Note: Please contact BAPI customer support if your location will include over 100 monitored points.



Manufactured by Building Automation Products, Inc., 750 N. Royal Ave., Gays Mills, WI 54631 USA  
Ph:+1-608-735-4800 • Fax:+1-608-735-4804 • E-mail:sales@bapivac.com • Web:www.bapivac.com

Automated Logic and the Automated Logic logo are registered trademarks of Automated Logic Corporation