



Features & Options

- Etched Teflons Leads on Remote Sensors
- Plenum Cable or FEP Cable on Remote Probes
- Double Encapsulated Sensors on Remote Probes

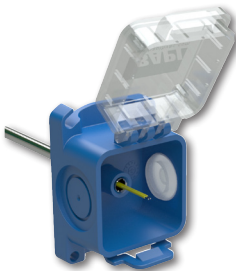
BAPI Remote Sensors feature a .75" long encapsulation shell and etched Teflon leads in lengths of 6", 18", 5', 10', 15', 20', and 25'. Remote Sensors are perfect for tight locations. Additional cable options, lead lengths and probe styles are available.

Remote Probes feature a 1.75" long stainless steel probe with either Plenum-Rated Cable or FEPJacketed Cable. Lead lengths are 18", 5', 10', 15', 20', and 25'. Remote Probes are commonly used in refrigerated case or strap-on applications. They are ideal for hard-to-access areas or spaces where the usual Immersion or Duct Sensors do not fit well. Additional cable options, lead lengths and probe styles are available upon request.

Remote Sensors and Probes are available with a new BAPI-Box Crossover enclosure or the BAPI-Box 2 enclosure .

The BAPI-Box Crossover

The new BAPI-Box Crossover enclosure features a hinged cover with thumb latch for easy termination. A pierceable knockout plug is available for the open port. See the Accessories section for more info.

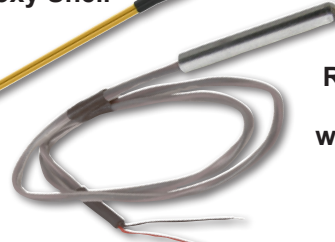


(Shown with knockout plug sold separately.)

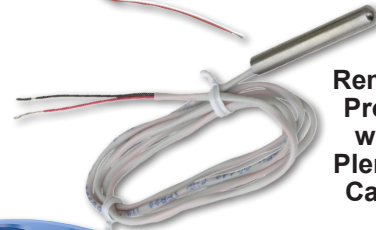
Remote Sensor with Epoxy Shell



Remote Probe with FEP Cable



Remote Probe with Plenum Cable



BAPI-Box 2 (BB2)



BAPI-Box Crossover (BBX)

Specifications

Environmental Operation Range:

Temperature Sensor: -40 to 105 °C
 Units w/ Plenum-Rated Wire: -20 to 75 °C
 Temperature Transmitter: -20 to 70 °C
 Humidity: 0 to 100%, non-condensing

Probe Material:

Round Probe: Stainless Steel

Enclosure Material:

UV-resistant polycarb., UL94, V-0

Sensing Element:

Thermistor or RTD

(See Sensors Section for Specs.)

BAPI-Box Crossover Enclosure Rating:

IP10, NEMA 1 (IP44 with knockout plug in open port)

BAPI-Box 2 Enclosure Rating:

IP66, NEMA 4X

Encl. Dimensions: H x W x D

BAPI-Box Crossover:
 3.1 x 2.2 x 1.9" (79 x 56 x 49mm)

BAPI-Box 2:
 4.9 x 2.8 x 2.4" (125 x 72 x 60mm)

(For enclosure dimension drawings, turn to the end of the section.)





Submittal sheets without List Prices are available on our website at www.bapihvac.com

Use the Option Selection Guide below to create your custom part number. Replace the number and parenthesis with the designator for each selection. Skip the designator and dashes for optional selections that are not required in your configuration.

Remote Sensors and Probes Option Selection Guide:

BA/ (#1) - (#2) - (#3)

#1: Temperature Sensor (required)

1K[375].....	1K Platinum RTD (375 curve).	\$25
1K[Ni].....	1K Ω Nickel RTD	\$35
1K.....	1K Platinum RTD (385 curve).	\$25
1.8K.....	1.8K Thermistor	\$18
3K.....	3K Thermistor	\$18
10K-2.....	10K-2 Thermistor.....	\$18
10K-3.....	10K-3 Thermistor.....	\$18
10K-3[11K].....	10K-3[11K] Thermistor.....	\$18
20K.....	20K Thermistor	\$18

1K Plat. RTD Transmitters below with 4 to 20 mA Output - BAPI-Box 2 Enclosure required.

T1K[32 TO 212F].....	32 to 212°F Range	\$125
T1K[20 TO 120F].....	20 to 120°F Range	\$125
T1K[0 TO 100F].....	0 to 100°F Range	\$125
T1K[0 TO 100C].....	0 to 100°C Range.....	\$125
T1K[-7 TO 49C].....	-7 to 49°C Range	\$125
T1K[-18 TO 38C].....	-18 to 38°C Range	\$125

Matched Transmitters are also available. Contact your BAPI representative for ordering.

#2: Probe and Cable Options (required)

REMOTE SENSOR, ETCHED TEFLON LEADS

PP-6".....	Remote Sensor, 6" Leads.....	\$-4
------------	------------------------------	------

REMOTE SENSOR, PLENUM-RATED CABLE

PP-18".....	Remote Sensor, 18" Leads.....	\$-4
PP-5'.....	Remote Sensor, 5' Leads.....	\$-2
PP-10'.....	Remote Sensor, 10' Leads.....	\$0
PP-15'.....	Remote Sensor, 15' Leads.....	\$2
PP-20'.....	Remote Sensor, 20' Leads.....	\$4
PP-25'.....	Remote Sensor, 25' Leads.....	\$6

Additional options are available for these units but not shown in this Selection Guide. Contact your BAPI representative for the complete list of options. Submittal sheets without List Prices can be downloaded from our website at www.bapihvac.com

REMOTE PROBE, PLENUM-RATED CABLE

RPP-6".....	Remote Probe, 6" Leads	\$0
RPP-18".....	Remote Probe, 18" Leads	\$0
RPP-5'.....	Remote Probe, 5' Leads.....	\$2
RPP-10'.....	Remote Probe, 10' Leads.....	\$4
RPP-15'.....	Remote Probe, 15' Leads.....	\$6
RPP-20'.....	Remote Probe, 20' Leads.....	\$8
RPP-25'.....	Remote Probe, 25' Leads.....	\$10

REMOTE PROBE, FEP-JACKETED CABLE

RPFEP-6".....	Remote Probe, 6" Leads	\$3
RPFEP-18".....	Remote Probe, 18" Leads	\$3
RPFEP-5'.....	Remote Probe, 5' Leads.....	\$5
RPFEP-10'.....	Remote Probe, 10' Leads.....	\$10
RPFEP-15'.....	Remote Probe, 15' Leads.....	\$15
RPFEP-20'.....	Remote Probe, 20' Leads.....	\$20
RPFEP-25'.....	Remote Probe, 25' Leads.....	\$25

REMOTE PROBE, FEP-JACKETED CABLE SUITABLE FOR SUBMERSION

RPFEP2-6".....	Remote Probe, 6" Leads	\$10
RPFEP2-18".....	Remote Probe, 18" Leads	\$10
RPFEP2-5'.....	Remote Probe, 5' Leads.....	\$15
RPFEP2-10'.....	Remote Probe, 10' Leads.....	\$20
RPFEP2-15'.....	Remote Probe, 15' Leads.....	\$25
RPFEP2-20'.....	Remote Probe, 20' Leads.....	\$30
RPFEP2-25'.....	Remote Probe, 25' Leads.....	\$35

#3: Enclosure

(optional, BB2 required for units with transmitter)		
BBX.....	BAPI-Box Crossover (IP10)	\$0
BB2.....	BAPI-Box 2 (IP66, NEMA 4X) ..	\$12

Example Number: BA/ (10K-2) - (RPP-18") - (BBX)

Actual Number (with parenthesis removed): BA/10K-2-RPP-18"-BBX

Description: 10K-2 Thermistor, Outside Air Temperature Sensor, Remote Probe with Plenum Rated Cable, 18" Cable Leads, BAPI-Box Crossover Enclosure.

List Price: \$18 (10K-2 Thermistor) = \$18 List Price

Your Number: BA/

