

Overview

In computers, a locale represents a set of parameters that defines the user's language, region and any special preferences the user wants to see in their user interface. Usually a locale identifier will consist of at least a language code and a country/region code.

The locale settings usually include the following display settings:

- Number format settings
- Character classification, case conversion settings
- Date-time format setting
- String collation setting
- Currency format setting
- Paper size setting
- Color setting
- And others

Opening a Blü-Test CSV Export File with a Different Locale Origin

For the BluTest application, the settings from the above list that are especially relevant are Number format and date-time format settings.

When the BluTest app user selects to export their data to a comma separated value (CSV) file, the locale that is used by their mobile device will be used to generate the csv file. Any numbers will be displayed in the format specific to their locale. The same will apply to any date/times stored within the CSV export file.

A problem may arise when an attempt to open a CSV file on a computer that has a different locale than the mobile device which generated the file originally. For example, if a user in Germany generates a CSV export file on a device that is set to the local locale (Germany). If a user in the United States attempts to open the CSV export file in Microsoft Excel they will notice the numbers and dates within the file will have a different look to them. Numbers will use the German format as will dates. 15.76 will be displayed as 15,76 where December 11, 2020 will appear as 11/12/2020. The United States use would expect the number to be 15.76 and the date to be 12/11/2020, respectively. The default behavior of the "Open CSV" within Excel is to assume the file is in the locale defined on the computer used to open the file. For instances in which the file is generated in locales that are different from those with are opening the file, more information is needed to instruct Excel on how to convert these values.

Microsoft has an option in Excel for specifying the locale to use for opening a CSV File. This feature is called Excel Power Query. To open a CSV file from a different source locale, perform the following steps:

1. From the Data Tab, Select the "New Query" dropdown (located in the Get & Transform section).

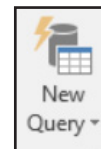


Fig. 1: New Query Dropdown

2. From the "From File" Item, select "From CSV".

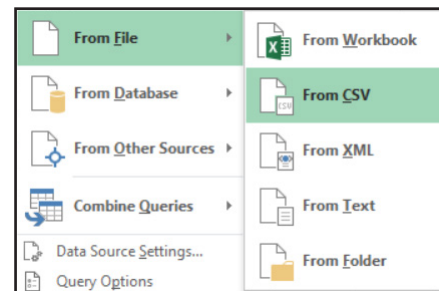


Fig. 2: From File and From CSV Selections

Continued on next page...

Opening a Blü-Test CSV Export File with a Different Locale Origin continued...

- From the dialog that is displayed, select the File Origin locale and the Delimiter (optional). The CSV file should now open with the numbers and dates/times in the correct format.

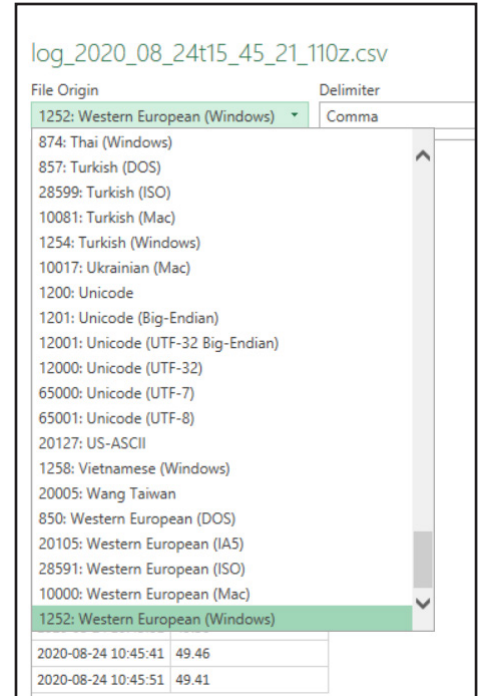


Fig. 3: File Origin Locale Selection

Setting Locale on a Windows 10 Computer

If you want to change the Setting Locale on a Windows 10 Computer, follow the steps below:

- Open the Control Panel by right clicking the Start button and selecting “Search” in the popup menu. Type “Control Panel” into the search box and Windows will search for and open the Control Panel application (Fig 4).
- Select Region which opens the “Region Settings” window. Select the locale from the “Current system locale” dropdown. You can also change the date and time formats from the “Region Settings” window.

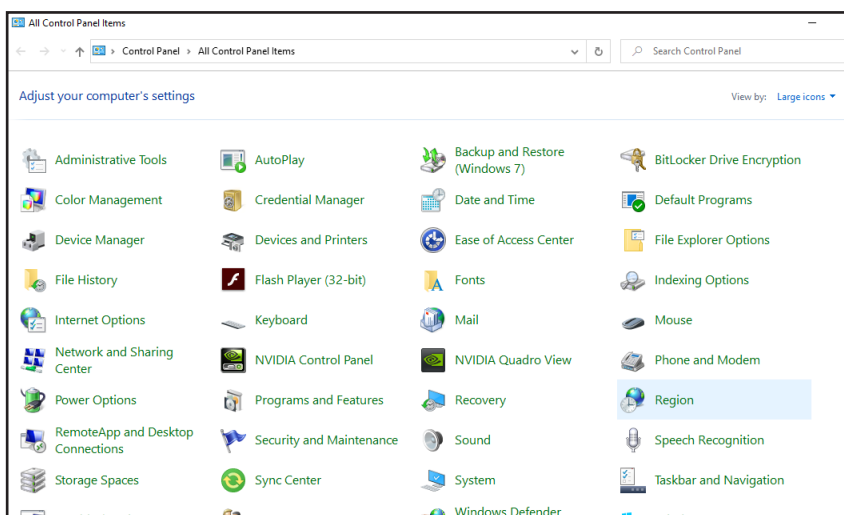


Fig. 4: Control Panel Application in Windows 10

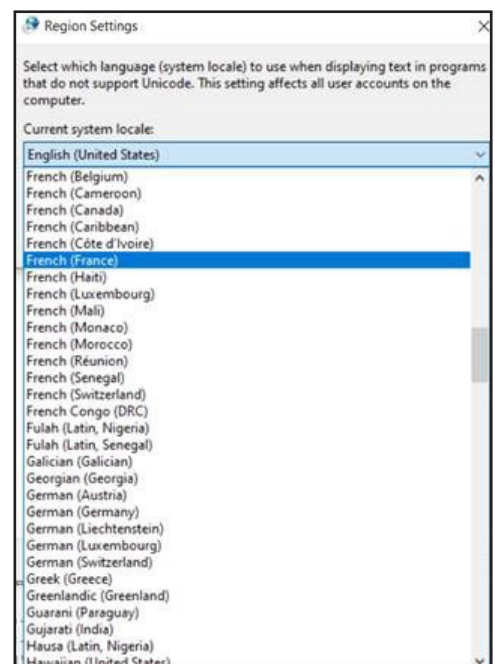


Fig. 5: Region Settings Window