



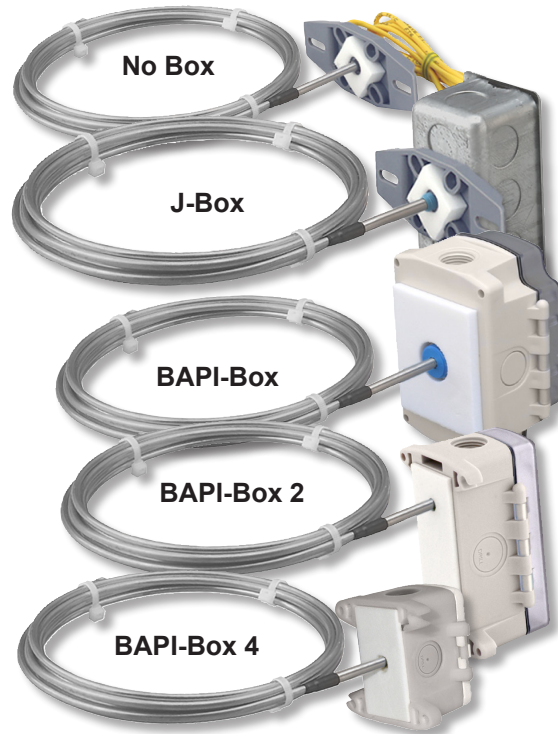
Rev. 01/16/15

## Features & Options

- Averaging Lengths: 8', 12' and 24'
- Several Enclosure Styles

Duct Averaging Units feature medical-grade closed cell foam to seal the probe insertion hole and to absorb vibration. Mounting tabs allow for easy installation directly to the wall of the duct. All units have etched Teflon leadwires and encapsulated sensors to create a watertight package that can perform under real world conditions.

Duct Averaging Units come standard with a 2"x4" steel J-Box but are also available with no box, or a watertight BAPI-Box or BAPI-Box 2 enclosure or a nylon & ABS plastic BAPI-Box 4.



## Specifications

### Environmental Operation Range:

Temperature:

BAPI-Box Enclosures: -40 °C to 85 °C

J-Box and No Box: -40 °C to 100 °C

Humidity: 0 to 100%, non-condensing

### Enclosure Material and Rating:

BAPI-Box: Polycarbonate, UL94, V-0

BAPI-Box 2: Polycarbonate, UL94, V-0

BAPI-Box 4: Nylon & ABS Plastic, UL94, V-0

J-Box Model: Galv. Steel

### Encl. Rating:

BAPI-Box / BAPI-Box 2: IP66, NEMA 4

BAPI-Box 4: IP10

(IP44 with Knockout Plug)

J-Box Model: IP20, NEMA 1

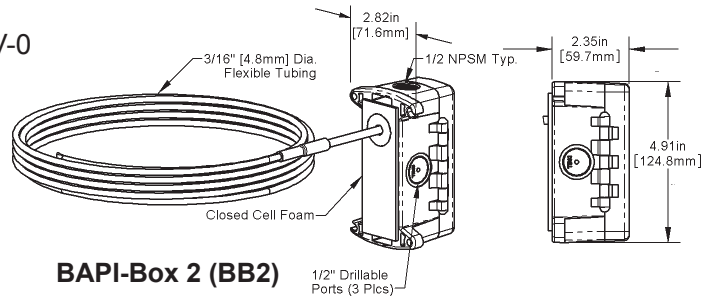
### 10K-2 Thermistor Sensor Specifications

**Resistance:** 10 kΩ @ 25°C, -55°C to 150°C range

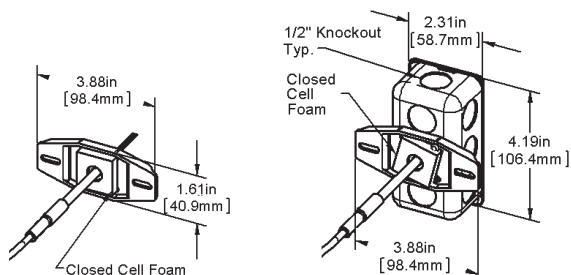
**Standard Accuracy:** 0.2°C (±0.36°F) at 0 to 70°C

**Dissipation Constant:** 2.7 mW/°C

**Stability(drift):** Less than ±0.1°C (0.18°F) drift over 10 years.

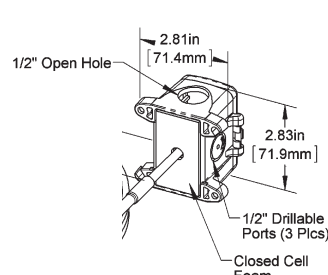


**BAPI-Box 2 (BB2)**

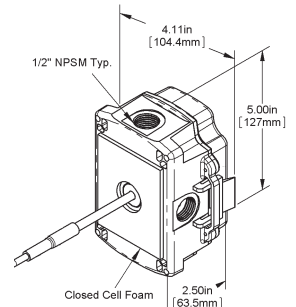


**No Box (NB)**

**J-Box (JB)**



**BAPI-Box 4 (BB4)**



**BAPI-Box (BB)**

### Ordering Information/Part Numbers

#### Units with J-Box Enclosure

ALC/10K-2-A-8' ..... 8' Duct Averaging Unit with 10K-2 Thermistor and J-Box Enclosure  
ALC/10K-2-A-12' ..... 12' Duct Averaging Unit with 10K-2 Thermistor and J-Box Enclosure  
ALC/10K-2-A-24' ..... 24' Duct Averaging Unit with 10K-2 Thermistor and J-Box Enclosure

#### Units with BAPI-Box Enclosure

ALC/10K-2-A-8'-BB ..... 8' Duct Averaging Unit with 10K-2 Thermistor and BAPI-Box Enclosure  
ALC/10K-2-A-12'-BB ..... 12' Duct Averaging Unit with 10K-2 Thermistor and BAPI-Box Enclosure  
ALC/10K-2-A-24'-BB ..... 24' Duct Averaging Unit with 10K-2 Thermistor and BAPI-Box Enclosure

#### Units with BAPI-Box 2 Enclosure

ALC/10K-2-A-8'-BB2 ..... 8' Duct Averaging Unit with 10K-2 Thermistor and BAPI-Box 2 Enclosure  
ALC/10K-2-A-12'-BB2 ..... 12' Duct Averaging Unit with 10K-2 Thermistor and BAPI-Box 2 Enclosure  
ALC/10K-2-A-24'-BB2 ..... 24' Duct Averaging Unit with 10K-2 Thermistor and BAPI-Box 2 Enclosure

#### Units with BAPI-Box 4 Enclosure

ALC/10K-2-A-8'-BB4 ..... 8' Duct Averaging Unit with 10K-2 Thermistor and BAPI-Box 4 Enclosure  
ALC/10K-2-A-12'-BB4 ..... 12' Duct Averaging Unit with 10K-2 Thermistor and BAPI-Box 4 Enclosure  
ALC/10K-2-A-24'-BB4 ..... 24' Duct Averaging Unit with 10K-2 Thermistor and BAPI-Box 4 Enclosure

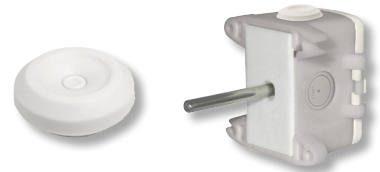
#### Units with No Box

ALC/10K-2-A-8'-NB ..... 8' Duct Averaging Unit with 10K-2 Thermistor and No Box  
ALC/10K-2-A-12'-NB ..... 12' Duct Averaging Unit with 10K-2 Thermistor and No Box  
ALC/10K-2-A-24'-NB ..... 24' Duct Averaging Unit with 10K-2 Thermistor and No Box

All the No Box Units above have 6" etched teflon leadwires.

### BAPI-Box 4 Pierceable Knockout Plug

A Pierceable Knockout Plug is available for the open port in the BAPI-Box 4 enclosure. With the plug installed, the BAPI-Box 4 carries an IP44 rating. See "Accessories" for more info.



Pierceable Knockout Plug and  
BAPI-Box 4 duct sensor with  
plug installed in the open port