

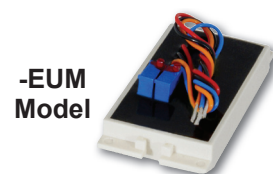


Features & Options

- Almost 500 Ranges Predefined and Custom Ranges Available
- Calibration Range from -148°F to 900°F
- Fully Encapsulated with Multiple Mounting Configurations
- Terminal or Flying Lead

BAPI's loop powered 4 to 20mA temperature transmitters feature a 1,000Ω Platinum RTD (385 curve) and are available in a wide selection of temperature ranges or custom ranges.

They mount in a variety of enclosures to accommodate any application and terminate with flying leads or terminal screws. The unit is fully encapsulated (ruggedized) with a high thermal conductivity material to prevent circuit overheating and is water resistant.



-EUM Model



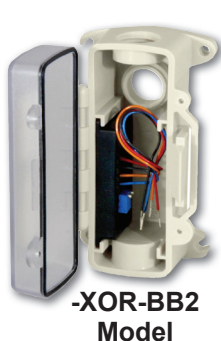
-STM Model



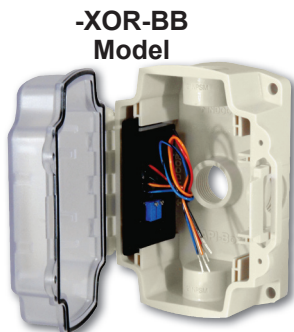
-TRK Model



-XOR Model



-XOR-BB2 Model



-XOR-BB Model



-XOR-WP Model

Specifications

Power Required: 7 to 40VDC

Transmitter Output: 4 to 20mA, 850Ω@24VDC

Output Wiring: 2 Wire Loop

Flying Leads 4 to 22 AWG

Opt. Terminals -TB, 4 Terminal Block, 24 to 12 AWG

Calibration Span: Min. 30°F (16.6°C), Max 1000°F (555°C)

Calibration Zero: Min. -148°F (-100°C), Max 900°F (482°C)

Accuracy: ±0.065% of Span

Linearity: ±0.125% of Span

RTD Sensor (2 Wire):

1KΩ, 2 Wire Plat. (PT), 385 Curve

Matched (M): 13 to 302°F (-25 to 150°C) with 3-point certificate (25%, 50% and 75%)

Mounting Shell: ABS shell w/ Waterproof Urethane Fill

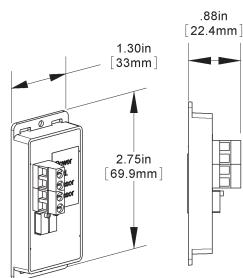
Transmitter Ambient: 0 to 95% RH, Non-condensing
-4 to 158°F, (-20° to 70°C)

Enclosure: See ordering grid for ratings

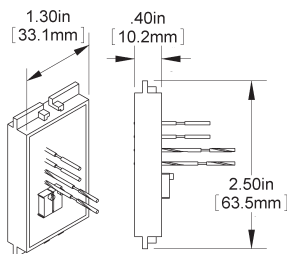
-XOR Galvanized Steel, UL94H-B

-BB & BB2 ... Polycarbonate, UL94V-0, UV Rated

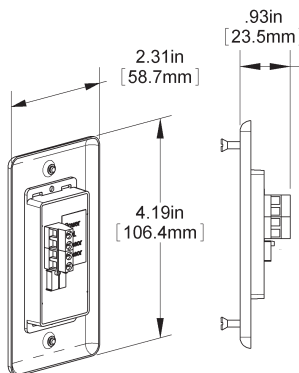
Agency: RoHS



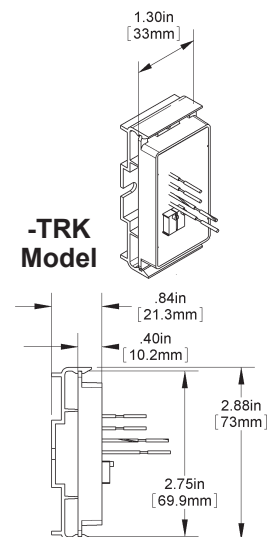
-STM Model
(shown with optional Terminal Block)



-EUM Model



-XOR Model
(shown with optional Terminal Block)



-TRK Model



4 to 20 mA Temperature Transmitters

A59

Rev. 05/27/15

Temperature Sensors

Ordering Grids without List Prices are available on our website at www.bapihvac.com

Ordering Information		Temperature Transmitters	List Price	Your Order
BA/	Temperature Transmitter Type (Required) Must include a "range" figure			
	T1K[range]	1K Platinum RTD, 1.000 Ω @ 0 °C with 4 to 20 mA Output	\$100	\$ _____
	T1KM[range]	1KΩ @ 0°C, Platinum RTD and Transmitter with 4 to 20mA Output and NIST certification	\$280	\$ _____
	Custom temperature transmitter ranges are available. Common ranges are listed below.			
		0 TO 100F (-17.7 TO 37.7C) 32 TO 122F (0 TO 50C) 40 TO 90F (4.4 TO 32.2C)		
		20 TO 120F (6.7 TO 48.9C) 32 TO 134F (0 TO 56.7C) 45 TO 96F (7.2 TO 36.6C)		
	Configuration & Optional Enclosure (Required)			
	-XOR	Temperature Transmitter in snap track mountable shell, w/ metal plate		
	-XOR-EUM	Temperature Transmitter in EU size shell		
	-XOR-STM	Temperature Transmitter in snap track mountable shell, no metal plate		
	-XOR-TRK	Temperature Transmitter with 1.25" inch wide piece of 2-3/4" snap track	\$5	\$ _____
	-XOR-BB	Temperature Transmitter in a BAPI-Box Enclosure - IP66 rated, UV-resistant polycarbonate	\$12	\$ _____
	-XOR-BB2	Temperature Transmitter in a BAPI-Box 2 Enclosure - IP66 rated, UV-resistant polycarbonate	\$12	\$ _____
	-XOR-WP	Temperature Transmitter in a Weatherproof Enclosure - NEMA 3R rated metal enclosure	\$12	\$ _____
	Screw Terminals Optional			
	-TS	Terminal Strip terminals for RTD, power and signal		
EXAMPLE				
BA/	T1K[0 TO 100F]	-XOR		
Example Part Number: BAPIT1K[0 TO 100F]-XOR			Total =	\$ _____
Your Part Number:				



A complete list of temperature ranges for the T1K transmitter is available on the Application Notes section of the BAPI website at www.bapihvac.com.

