

Termination



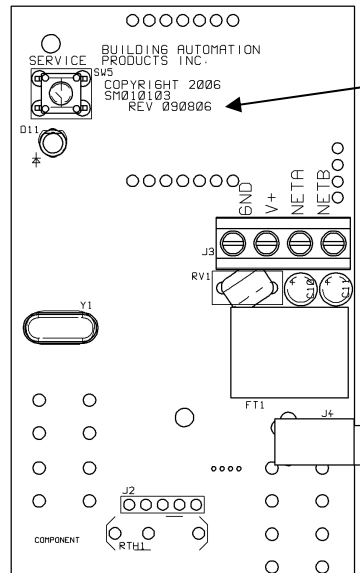
BAPI does not recommend wiring the sensor with power applied as accidental arcing may damage the product and will void the warranty.

Please refer to “**Junction Box and Wiring Guidelines for Twisted Pair LonWorks®**”

Bulletin #005-0023-01M” at

www.echelon.com for all wiring specifications.

J3	NETB	Network B
	NETA	Network A
	V+	8 to 24 VDC or 12 to 28 VAC
	GND	Ground



Note: These instructions are only valid for Rev 090806 units!

Figure 1; Printed Circuit Board

Network Variable Listing and Definition

Network Variable	SNVT Type	Description
nviRequest	SNVT_obj_request	[Request information from sensor]
nvoStatus	SNVT_obj_status	[Status information from sensor]
nvoHVACTemp	SNVT_temp_p	[Temperature Output]
nciMaxSendTime	SNVT_time_sec	[Maximum amount of time before nvoHVACTemp is updated]
nciMinSendTime	SNVT_time_sec	[Minimum amount of time before nvoHVACTemp is updated]
nciMinDelta	SNVT_Temp_p	[Minimum change in temperature that must be observed in order for information to be sent to the network]
nciTmpOffset	SNVT_temp_p	[Temperature Offset]
nviTempSP	SNVT_Temp_p	[Temperature setpoint sent from network to sensor]
nvoTempSP	SNVT_temp_p	[Temperature setpoint sent from sensor to network]
nciTempSPlo	SNVT_Temp_p	[Minimum Temperature Setpoint]
nciTempSPhi	SNVT_temp_p	[Maximum Temperature Setpoint]
nviOccupancy	SNVT_occupancy	[Occupancy variable sent from network to sensor]

Specifications subject to change without notice.



“L-Temp”-Temperature with Setpoints – Rev 090806

Installation and Operating Instructions

11797_ins_L-Temp_set

Rev 02/09/2007

<u>Network Variable</u>	<u>SNVT Type</u>	<u>Description</u>
nvoOccupancy	SNVT_occupancy	[Occupancy variable sent from sensor to network]
nvoOccTrig	SNVT_occupancy	[5 second occupancy toggle, unoccupied to occupied]
nviOATemp	SNVT_temp_p	[Outside Air Temperature for local display]
nciLCDRate	SNVT_time_sec	[Toggle rate of LCD from Inside Temperature to Outside Air Temperature in seconds]
ncist_bits	SNVT_state	[bit 0 = Degree Setting for LCD, 1 = °C, 0 = °F bits 1-15 = reserved for future use]

Contact BAPI for more information or setup files, if needed.

Specifications subject to change without notice.