

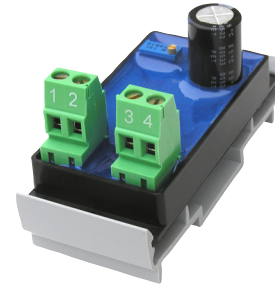
## Accessories

Rev. 12/16/10

### Features & Options

- Compact & Cost Effective
- 75 mA and 100mA models
- Self-resetting Thermal Fuse
- Operation & Fault LED Indicators
- Ruggedized Circuitry
- Fixed or Adjustable Outputs
- Output Protected Against Overload and Accidental Short Circuit

**Snaptrack  
Mountable!**



**VC100 with  
optional Snaptrack**

BAPI's voltage converters are a cost effective way of converting 24 VAC to 5, 12, 15 or 24 VDC for use on peripheral devices that require DC voltage. The converters are available with outputs of 75 mA or 100 mA. Both converters are very compact and designed to fit into standard 2.75" snaptrack.

Although most BAPI room units can run on 24 VAC power, converting to DC power eliminates the AC power "noise" which can affect the room sensor readings. BAPI's tests show that fluctuating and inaccurate signal levels are possible when AC power wiring is present in the same cable as the signal lines. To minimize the AC voltage noise, the DC converter must be mounted as close to the controller as physically possible. Do not mount the converter at the sensor end of the wire, the AC will still couple into the sensor signal if you do. All three models are available with fixed outputs of 5, 12 or 15 VDC, or an adjustable output of 5-24 VDC.

As a reference, the VC75 has the capability to power the following BAPI sensors: one X-Combo Temperature/Humidity Combination Room Unit; two Room, Duct or Outside Air Humidity Sensors; three R $\mu$ P Temperature Sensor Room Units.

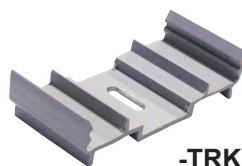
**Why use DC power instead of AC power?**  
(See the "Application Notes" section.)

### Ordering Information

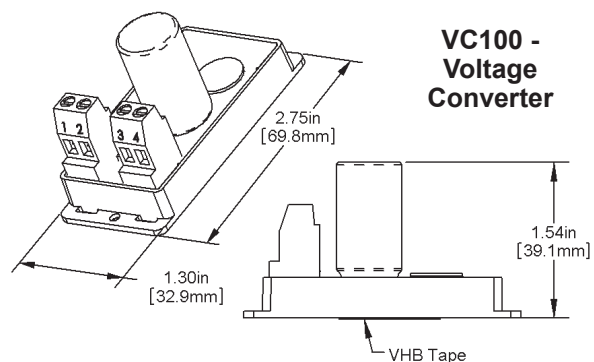
Part Number	Description
BA/VC75-5	5 VDC at 75 mA
BA/VC75-10	10 VDC at 75 mA
BA/VC75-12	12 VDC at 75 mA
BA/VC75-15	15 VDC at 75 mA
BA/VC75-ADJ	5-24 VDC (adj.) at 75 mA
BA/VC100-5	5 VDC at 100 mA
BA/VC100-10	10 VDC at 100 mA
BA/VC100-12	12 VDC at 100 mA
BA/VC100-15	15 VDC at 100 mA
BA/VC100-ADJ	5-24 VDC (adj.) at 100 mA

**See end of Section E for list pricing.**

Add **-TRK** to the end of the part number (BA/VC75-5-TRK) to include a 1.25" wide piece of 2.75" snaptrack.



### Specifications



#### Input Voltage:

18-30 VAC, 24 VDC

#### Input Current Max:

240 mA (5.8 VA)

#### Environmental Operation Range:

32°F to 158°F

#### Wiring:

Two pair 16 to 22 AWG

#### Rectification:

Half-Wave Rectified

#### Grounding:

AC & DC Ground are Common

#### Min. Input Voltage:

5, 10, 12 or 15VDC Output: 18 VAC  
24VDC Output: 19 VAC

**Mounting:** Standard 2-3/4" snaptrack or double-sided foam tape (supplied)